



## Hybrid Renewable Microgrids

**Geoff Hoble, General  
Manager Remote  
Energy**

July 2024

SEN Presents

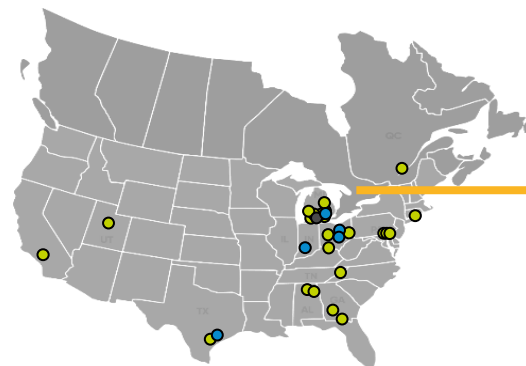
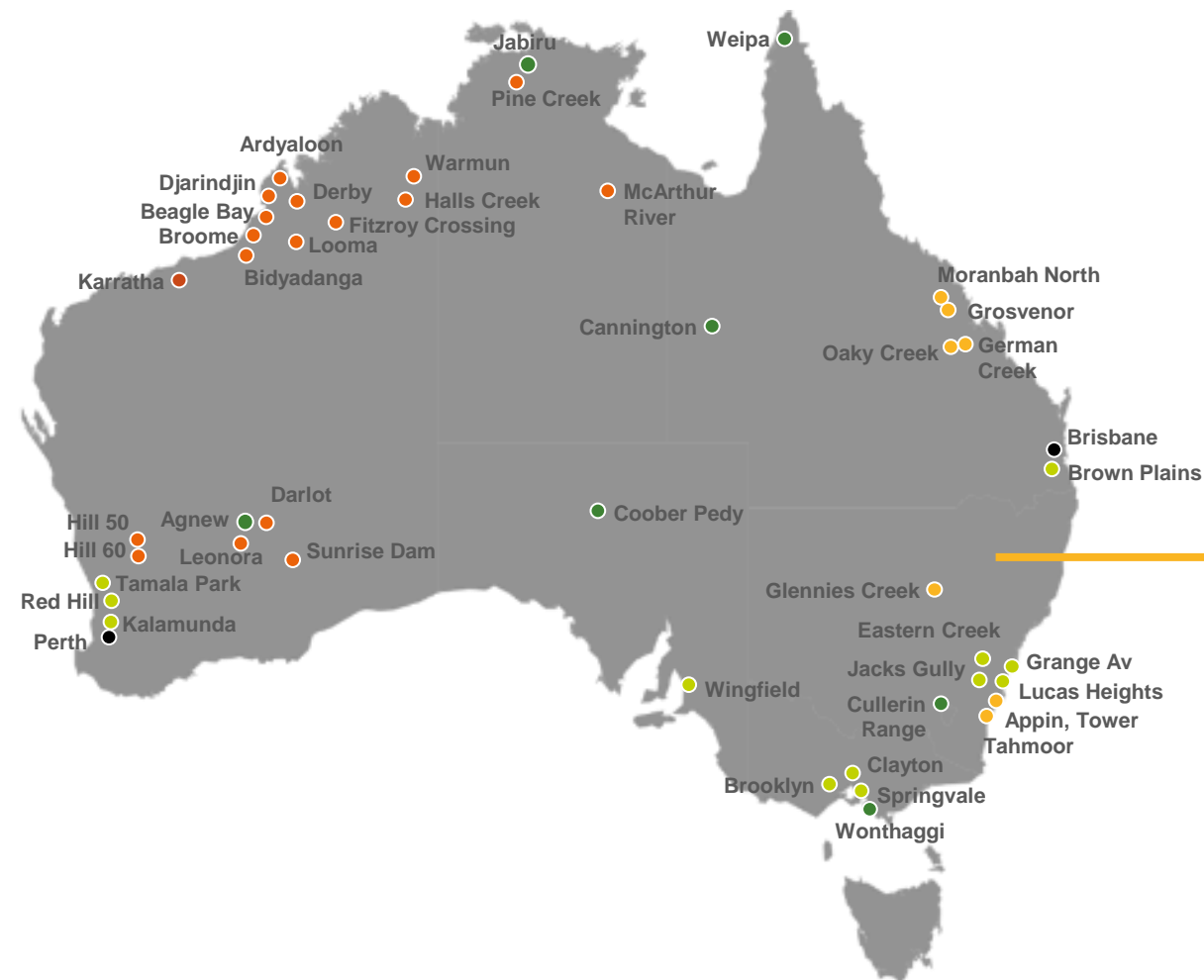




**83 power & renewable gas**  
facilities worldwide



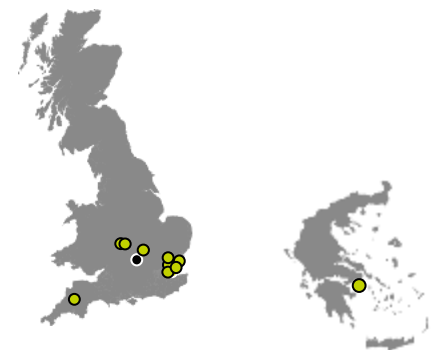
**>600**  
employees globally



**Growth focus on renewable fuels, 5 RNG facilities built in the US since 2021**



**Growth focus on remote hybrid renewable power generation**



Key	
	Remote energy
	Renewables
	Landfill gas
	LNG
	Waste coal mine gas
	RNG
	Office



**~1 GW**  
installed capacity

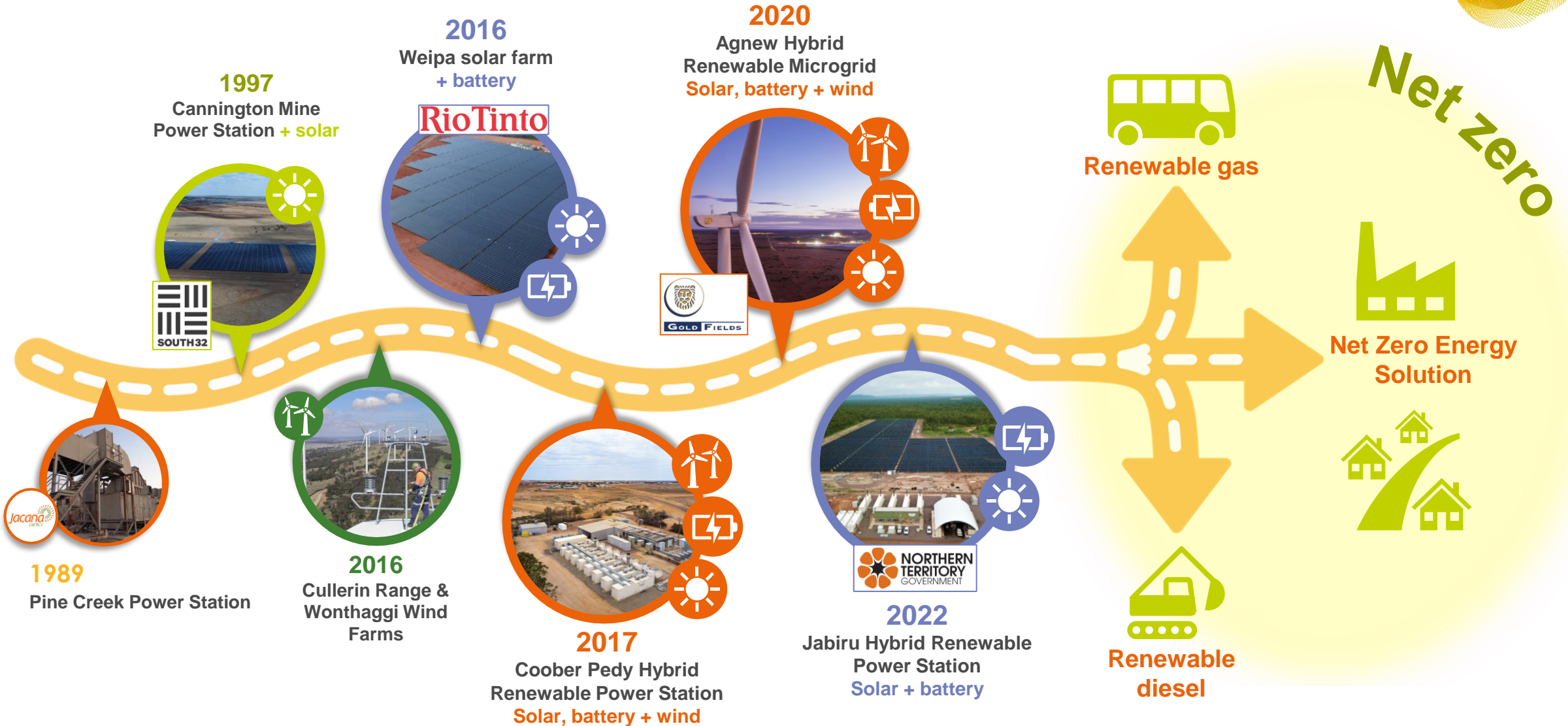


**~4.5 TWh**  
generated p.a.



**~3.4 million**  
tCO<sub>2</sub>-e avoided p.a.

# Supporting customers' sustainable energy journey



# Carbon abatement drivers



Government targets



Reporting



Safeguard mechanism



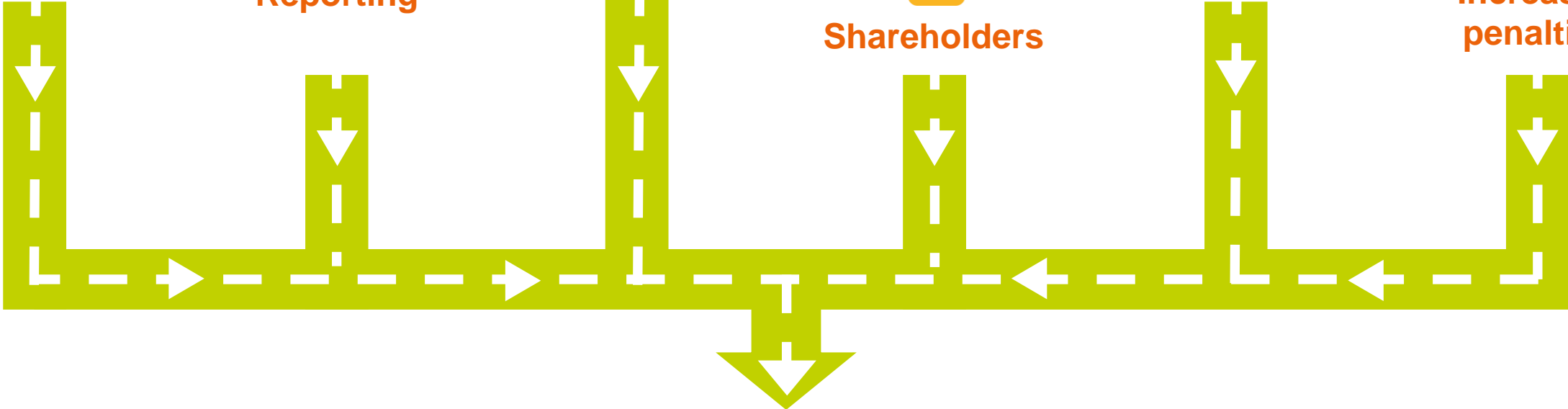
Shareholders



Finance availability



Increased penalties



Pathway to net zero





# Cooper Pedy Hybrid Renewable Power Station

South Australia, Australia

The longest continuous period the site has operated on 100% renewables is 97 hours

Customer



**District Council of Cooper Pedy**

 **9.3MW**  
total generating capacity

 **~75% of electricity**  
supplied to Cooper Pedy has been from renewable sources

 **1MW**  
solar

 **1MW/500kWh**  
battery & microgrid

 **4MW**  
wind generation





# Agnew Hybrid Renewable Microgrid

Western Australia

“Using renewable energies introduces a new risk profile to power supply, and power supply is key to gold production.”

“EDL has the operational capability, were competitive in the market for the project and also had the reputation and demonstrated hybrid renewable capability to mitigate those risks.”

- James Koerting, Energy Manager, Gold Fields

Customer



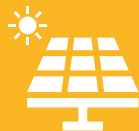
GOLD FIELDS



50-60%  
renewable energy



99.99%  
reliability



4MW  
solar



13MW/4MWh  
battery & microgrid



18MW  
wind generation



Thermal power  
18MW gas & 3MW diesel





# Jabiru Hybrid Renewable Power Station

## Northern Territory

“This is a big day for Jabiru... the town is no longer dependent on power generated at the closed mine.”

- Ruth Gamarrawu,  
Gundjeihmi Aboriginal Corporation chairwoman

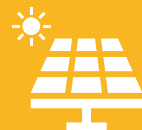


**50%**  
renewable energy



**Supports NT's renewable energy target**

50% renewable energy by 2030



**3.9MW**  
solar



**3MW/5MWh**  
battery

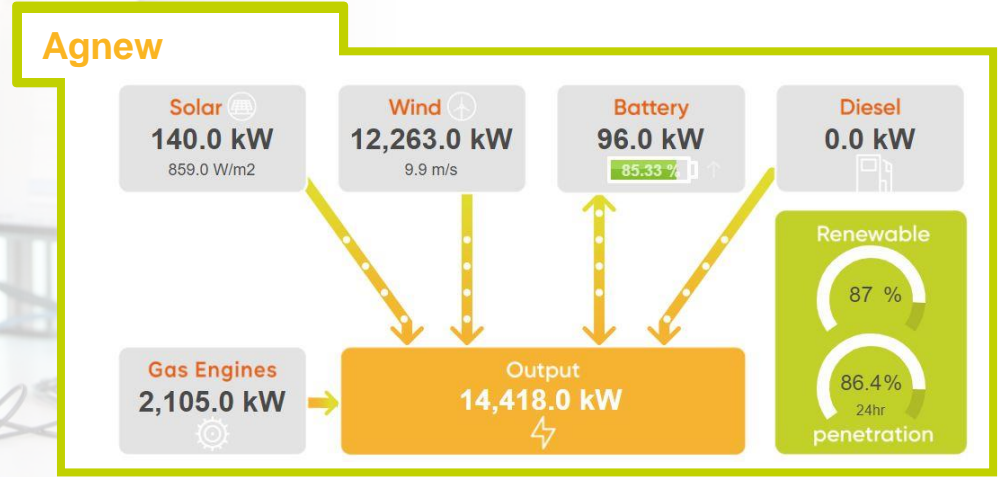


**Thermal power**  
4.5MW diesel



# Real-time hybrid data used in EDL's model

*Global Control Centre oversees the reliability of our sites 24/7*





# The zero-carbon mine roadmap



## Remote energy

**High-penetration renewable energy, typically ~80-90%**



**Electrify mobile plant and processes, load shifting**



## Cleaner energy

**Renewable fuels for hard-to-electrify areas**



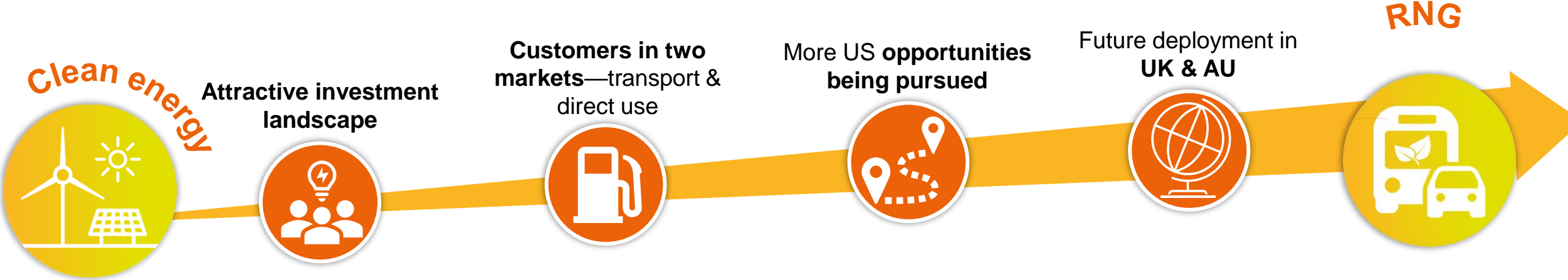
**We're well on our way to achieving this, and it's happening faster than we expected**



# North American RNG



*~AUD\$530M invested across five projects to date: Combined production capacity ~20TJ/day*







Thank you

[edlenergy.com](http://edlenergy.com)

